

- NOTES:
1. MATERIAL: PHOSPHOR BRONZE, THICKNESS  $0.12\text{mm} \pm 0.01$
  2. PLATING: 50~100u" NICKEL PLATING OVERALL, 1u" MIN. GOLD ON CONTACT, GOLD FLASH OVERALL
  3. SPEC. PLS. REFER TO PS-52242-XXXXX-XXX
  4. WIRE SIZE: 001 AWG28-AWG32; 002 AWG32-AWG36
  5. INSULATION O.D: 0.5mm MAX.

6. PART NUMBER

52243-T X X X-XXX

PART \_\_\_\_\_

T. TERMINAL \_\_\_\_\_

TYPE \_\_\_\_\_

O: NONE \_\_\_\_\_

001: AWG#28-32

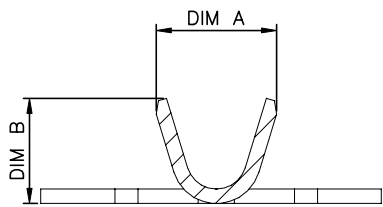
002: AWG#32-36

PLATING

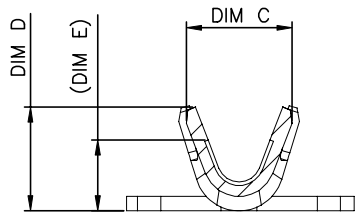
1: GOLD FLASH

MATERIAL

2. PHOSPHOR BRONZE



SECTION F-F  
SCALE 2:1



SECTION G-G  
SCALE 2:1

XXX	DIM A	DIM B	DIM C	DIM D	DIM E
001	1.07	1.08	1.03	1.02	0.82
002	1.03	0.87	0.88	0.86	0.62

QUALITY SYMBOLS	DRAWN BY	DATE			
MAJOR	Tsai, Wang Kun	22/12/23			
CRITICAL	CHECKED BY	DATE	<b>TITLE</b> 0.80mm WTB Terminal Crimping Type		
GENERAL TOLERANCES (UNLESS SPECIFIED)	K, HISATOMI	22/12/23			
X. $\pm 0.5$	APPROVED BY	DATE	UNITS	SIZE	RFQ NO.
X. $\pm 0.25$	Huang, Kuo Hua	22/12/23	mm	A4	
.XX $\pm 0.15$			SCALE	SHEET NO.	REV
.XXX $\pm 0.10$			1:1	1 OF 1	DWG NO.
ANGLES $\pm 2^\circ$					52243-TXXX-XXX